



EMMYWATCH
VINTAGE RESTORATIONS

Certina 25-011,25-011 OLD Movement Parts (1)

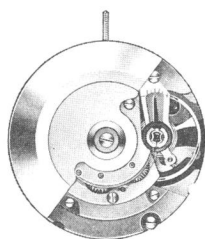
Compiled by EmmyWatch - <https://www.emmywatch.com>

CERTINA

Cal. 25-011

11½'''

Ancre - 17, 21 ou 25 rubis
 Seconde au centre directe
 Automatique
 Quantième à guichet
 Correcteur - rapide
 Ah (Alternances horaires) 21600



11½'''

Pallet-fork - 17, 21 or 25 jewels
 Direct sweep second
 Automatic
 Date showing through aperture in dial
 Rapid corrector
 Ah (Alternations per hour) 21600



11½'''

Ancora - 17, 21 o 25 rubies
 Segundero central directo
 Automático
 Calendario con ventanilla
 Corrector - rapido
 Ah (Alternaciones horarias) 21600

11½'''

Anker - 17, 21 oder 25 Rubine
 Direkte Zentrumsekunde
 Automatisch
 Datum mit Fenster
 Schnellkorrektor
 Ah (Halbschwingungen pro Stunde) 21600

EMMYWATCH
 VINTAGE RESTORATIONS

11½'''

Ancora - 17, 21 o 25 rubini
 Secondo al centro diretto
 Automatico
 Calendario a finestra
 Corrector - rapido
 Ah (Alternazioni orarie) 21600

Calibre de base

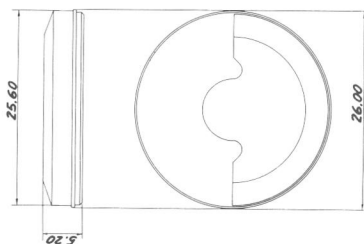
Basic calibre

Calibre de base

Grundkaliber

Calibro di base

25-021

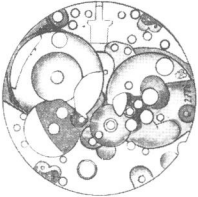


CERTINA

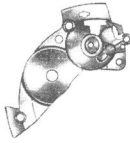
Pièces différentes du cal.
Parts varying from cal.
 Piezas diferentes del cal.
Teile, die verschieden sind vom Kal.
 Pezzi diversi da quelli del cal.

25-021

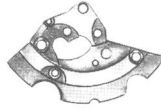
25-011



100



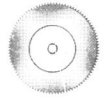
105



110



121/3



182



303/2



415



420



425



430



771

25-011



5105
5110
5121



5415



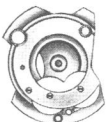
5420

EMMYWATCH
 VINTAGE RESTORATIONS

Pièces supplémentaires au cal.
Additional parts to cal.
 Piezas suplementarias al cal.
Zusätzliche Teile zu Kal.
 Pezzi supplementari al cal.

25-021

25-011



1134



1141



1143



1481



1482



1488



1498



1530

25-011



51134



51141



51498